

# Application-Report



Large diesel engines  
MAN + B&W Diesel AG, Augsburg

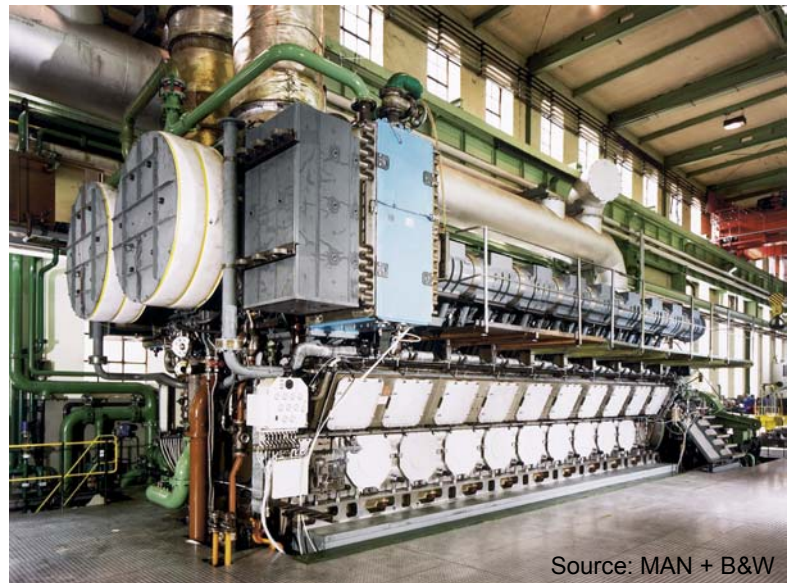


## Task:

The engine speed of large diesel engines must be kept within an ideal engine-specific range. Speed monitoring is used as a secondary safety circuit. Both excessive speeds and speeds which are too low must be measured securely and reported. Approval by Germanischen Lloyd (GL) is obligatory.

## Solution:

The programmable ROTAS speed monitor has a number of functions with which it can be ideally adapted to these requirements. Start-up override, adjustable switching thresholds and hystereses and a variable signal input for the most different types of sensors are only a few of its functions, which can be programmed at the factory or individually on site on the keyboard. It has been approved by Germanischen Lloyd for applications at sea.



Source: MAN + B&W

1: Keys for programming, 2: Current values, 3: Relay B (not active), 4: Relay A, 5: Limit relay A, 6: Switching direction relay A, 7: Switching direction relay B (not active), 8: Measurement units

**Rheintacho is a flexible, highly efficient partner- wherever speed must be measured, monitored or indicated. Innovation, the most modern production techniques and equipment, meticulous quality control along with a first-class workforce are the corner stones of our company. For the past 100 years, Rheintacho has used his extensive knowledge and experience to developed sensors, systems and customized solution to meet the customer's requirements.**